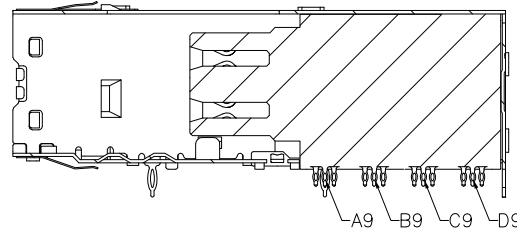
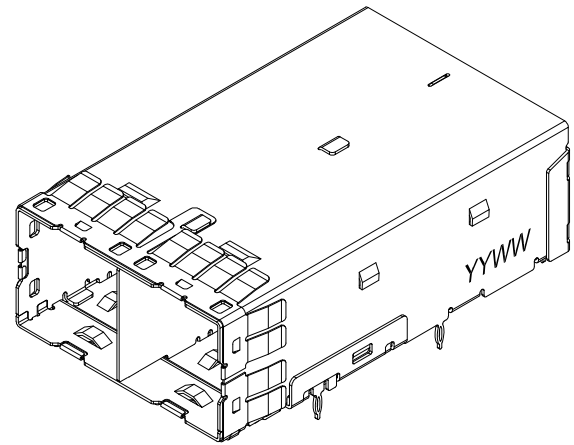
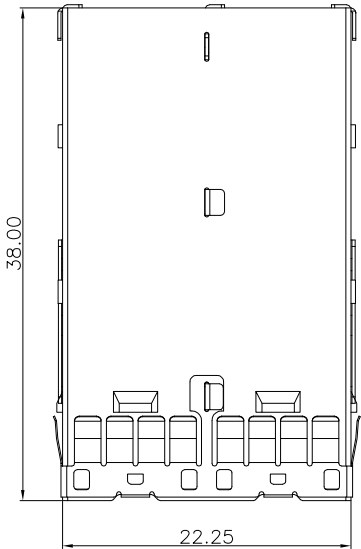


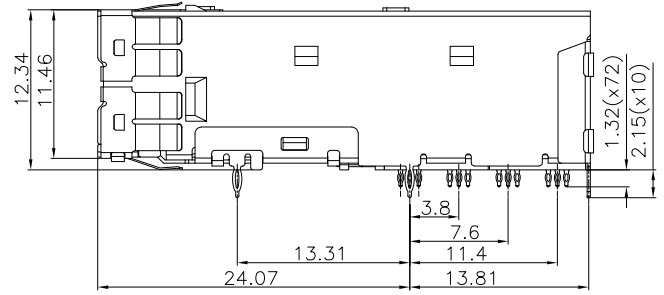
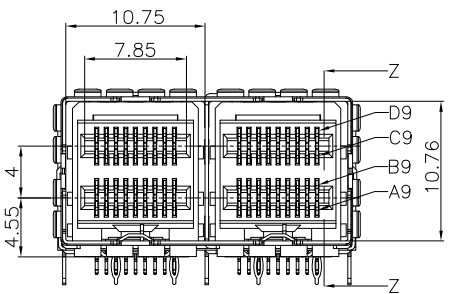
THIS DRAWING AND THE DATA DISCLOSED HEREIN OR HEREWITH IS NOT TO BE REPRODUCED USED OR DISCLOSED IN WHOLE OR IN PART TO ANYONE WITHOUT THE PERMISSION OF JESS-LINK PRODUCTS CO.,LTD.

CUSTOMER DRAWING

| REV. | DESCRIPTION | MDF'D | APP'D | DATE |
|------|--|-------|-------|------------|
| 01 | INITIAL DESIGN | Brown | Matsu | 08/28/2012 |
| 02 | ADD RECOMMENDED PRINTED CIRCUIT BOARD & JPC LOGO | Brown | Matsu | 03/24/2014 |
| 03 | | | | |



SECTION Z-Z



- NOTE:
- MATERIAL: FINISH
 HOUSING: HI-TEMP THERMOPLASTIC UL 94V-0 BLACK
 TERMINAL : COPPER ALLOY/ PLATING SEE P/N MARTAX
 EMI CAGE : COPPER SILVER ALLOY/PREPLATING Ni
 EMI SPRING : COPPER ALLOY/PREPLATING Ni
 - DATE CODE: YYWW
 YY=YEAR OF MANUFACTURE
 WW=WEEK OF MANUFACTURE
 - PACKAGE: TRAY
 - MOUNTING HARDWARE: M2X0.4 BUTTON HEAD SCREW
 MOUNTING SCREW LENGTH: BOARD THICKNESS +(0.9~1.4mm Max).
 THE CONNECTOR HOLD DOWN SCREW SHOULD BE TORQUED TO 2kgf/cm MAX.DO NOT OVER TORQUE.
 - OPTIONAL PARTS: JPC P/N
 SINGLE PORT LIGHT PIPE: P9212YLS SERIES
 DUAL PORT LIGHT PIPE: P9212YLD SERIES
 - P/N: MARTAX:

JPC P/N: P 9 2 1 2 C 0 3 0 0 0 T - 0

SFF 8644 EXTERNAL HD COMBO TYPE CONNECTOR

TYPE SERIES:
 1: SINGLE PORT SERIES
 2: 1X2 PORT SERIES
 4: 1X4 PORT SERIES

CAGE TYPE:
 A: STANDARD
 B: SUPPORT HEAT SINK
 C: STANDARD W/STOPS
 D: SUPPORT HEAT SINK W/STOPS

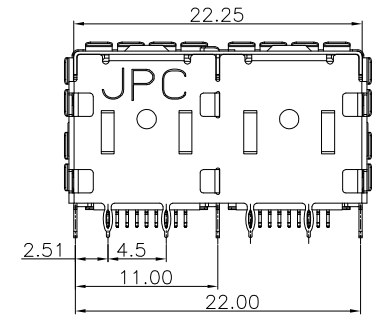
KEY:
 0: STANDARD KEY

CONNECTOR PLATING:
 2:15u' Au ON CONTACT AREA+ G/F TAIL
 3:30u' Au ON CONTACT AREA+ G/F TAIL

T : TRAY
 MOUNTING SCREW
 0: SHIP W/o SCREW

LIGHT PIPE OPTIONAL:
 0 : W/o LIGHT PIPE
 1 : SINGLE PORT LIGHT PIPE CLEAR
 2 : DUAL PORT LIGHT PIPE CLEAR

HEAT SINK OPTIONAL:
 0 : NON-HEAT SINK



| | | | | | |
|--------------------------------|---|--------------------------|------------------------------------|----------------------------|---|
| ROHS COMPLIANT HALOGEN FREE | Unit : mm | PROJECTION | JESS-LINK PRODUCTS CO.,LTD. | | |
| | GENERAL TOLERANCES: (UNLESS SPECIFIED) | | | | TITLE SFF 8644 EXTERNAL HD COMBO TYPE CONNECTOR(STANDARD W/STOPS 1X2 PORT) |
| | 0 = ±.45 0.0 = ±.30 0.00 = ±.20 0.000 = ±.10 0° = ± 2° 0.0° = ± 1° | D.R. 08/28/2012 Brown | James | SCALE 1:2 | SIZE A4 |
| | | CH.K 08/28/2012 James | APV.D 08/28/2012 Matsu | PART NO. P9212C03000T-0 | REV. 02 SH,T NO.1 OF 10 |

THIS DRAWING AND THE DATA DISCLOSED HEREIN OR HEREWITH IS NOT TO BE REPRODUCED USED OR DISCLOSED IN WHOLE OR IN PART TO ANYONE WITHOUT THE PERMISSION OF JESS-LINK PRODUCTS CO.,LTD.

CUSTOMER DRAWING

| REV. | DESCRIPTION | MDF'D | APP'D | DATE |
|------|--|-------|-------|------------|
| 01 | INITIAL DESIGN | Brown | Matsu | 08/28/2012 |
| 02 | ADD RECOMMENDED PRINTED CIRCUIT BOARD & JPC LOGO | Brown | Matsu | 03/24/2014 |
| 03 | | | | |

PCI ADD-IN CARD APPLICATION

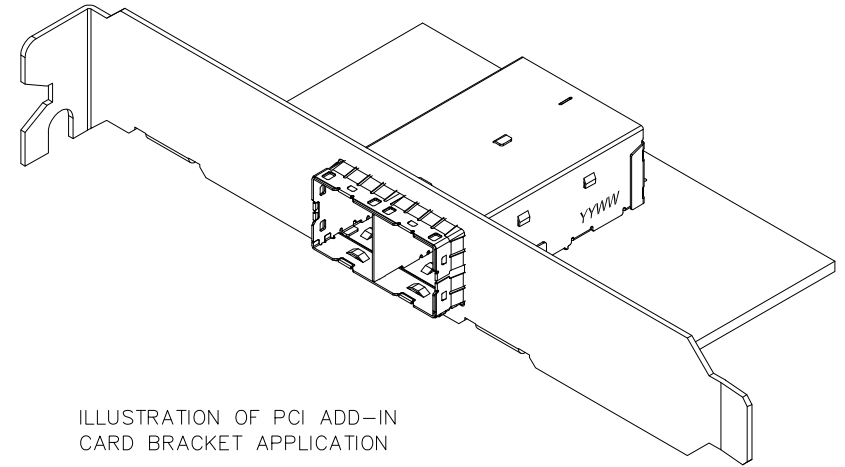
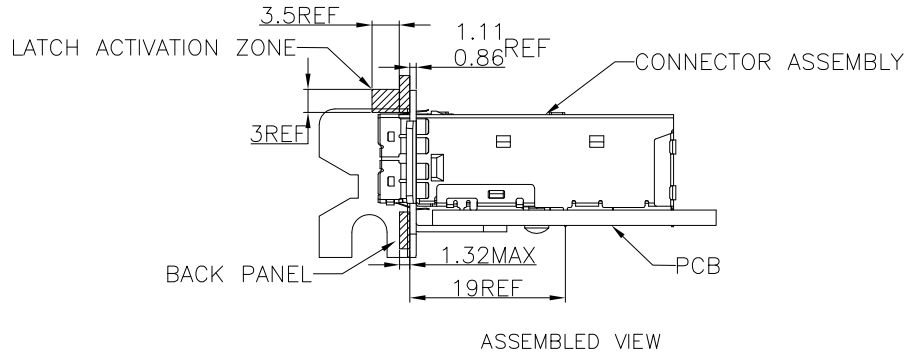
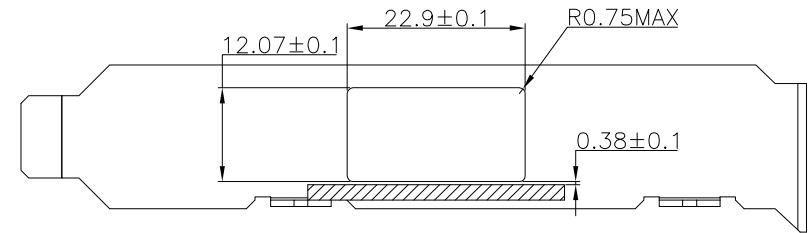
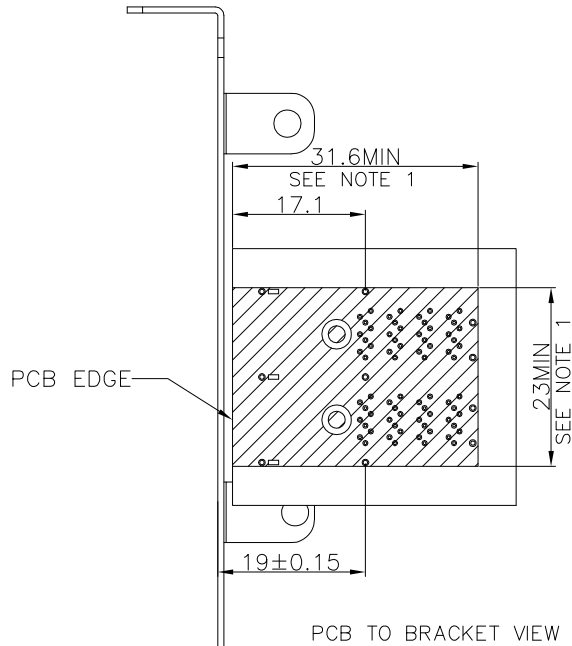


ILLUSTRATION OF PCI ADD-IN CARD BRACKET APPLICATION



I/O BRACKET CUT OUT (BRACKET NOT SUPPLIED)

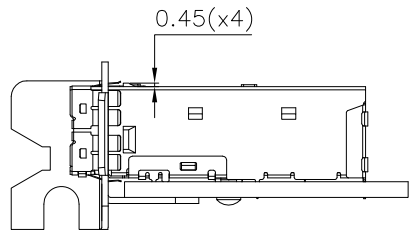
NOTE:
1. CONNECTOR KEEP OUT AREA

| | | | | | | | |
|-----------------------|---------------------|--|------------------|---------------------------------------|------------------------------------|--|-----------------------|
| ROHS COMPLIANT | HALOGEN FREE | Unit : mm | PROJECTION | | JESS-LINK PRODUCTS CO.,LTD. | | PRODUCT NO. OR LAYOUT |
| | | GENERAL TOLERANCES: (UNLESS SPECIFIED) | | | | | |
| | | 0 = ±.45 | D.R. 08/28/2012 | TITLE SFF 8644 EXTERNAL HD COMBO TYPE | REV. 02 | | |
| | | 0.0 = ±.30 | Brown 08/28/2012 | CONNECTOR(STANDARD W/STOPS 1X2 PORT) | | | |
| 0.00 = ±.20 | CH.K 08/28/2012 | SCALE SIZE PART NO. | SH,T NO.2 OF 10 | | | | |
| 0.000 = ±.10 | James | 1:1 A4 P9212C03000T-0 | | | | | |
| 0° = ± 2° | APV.D 08/28/2012 | Matsu | | | | | |
| 0.0° = ± 1° | | | | | | | |

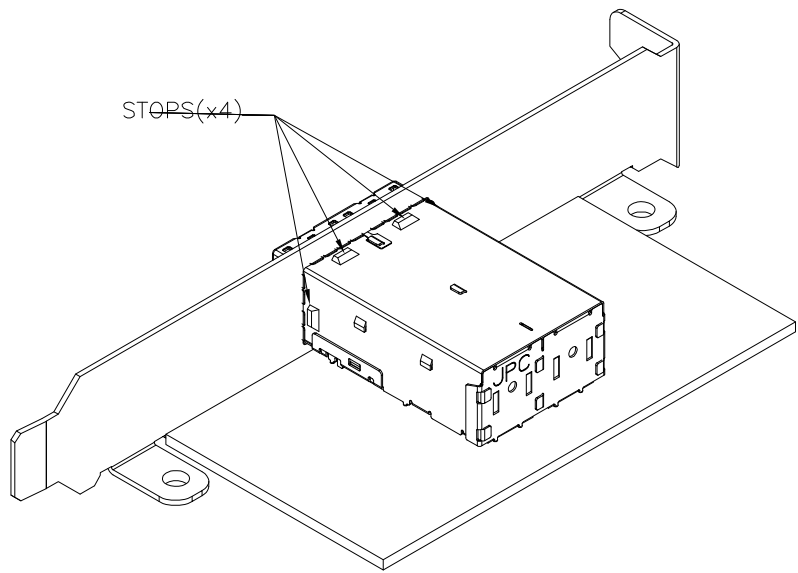
THIS DRAWING AND THE DATA DISCLOSED HEREIN OR HEREWITH IS NOT TO BE REPRODUCED USED OR DISCLOSED IN WHOLE OR IN PART TO ANYONE WITHOUT THE PERMISSION OF JESS-LINK PRODUCTS CO.,LTD.

CUSTOMER DRAWING

| REV. | DESCRIPTION | MDF'D | APP'D | DATE |
|------|--|-------|-------|------------|
| 01 | INITIAL DESIGN | Brown | Matsu | 08/28/2012 |
| 02 | ADD RECOMMENDED PRINTED CIRCUIT BOARD & JPC LOGO | Brown | Matsu | 03/24/2014 |
| 03 | | | | |



ASSEMBLED VIEW



| | | | | | | | | | |
|-----------------------|---------------------|--|------------------|---------------------------------------|------------------------------------|-------|-----------------------|----------|---------|
| ROHS COMPLIANT | HALOGEN FREE | Unit : mm | PROJECTION | | JESS-LINK PRODUCTS CO.,LTD. | | PRODUCT NO. OR LAYOUT | | |
| | | GENERAL TOLERANCES: (UNLESS SPECIFIED) | | | | | | | |
| | | 0 = ±.45 | D.R. 08/28/2012 | TITLE SFF 8644 EXTERNAL HD COMBO TYPE | | SCALE | SIZE | PART NO. | REV. 02 |
| | | 0.0 = ±.30 | Brown 08/28/2012 | CONNECTOR(STANDARD W/STOPS 1X2 PORT) | | | | | |
| 0.00 = ±.20 | CH.K 08/28/2012 | | | | | | | | |
| 0.000 = ±.10 | James | | | | | | | | |
| 0° = ± 2° | APV.D 08/28/2012 | | | | | | | | |
| 0.0° = ± 1° | Matsu | | | | | | | | |

THIS DRAWING AND THE DATA DISCLOSED HEREIN OR HEREWITH IS NOT TO BE REPRODUCED USED OR DISCLOSED IN WHOLE OR IN PART TO ANYONE WITHOUT THE PERMISSION OF JESS-LINK PRODUCTS CO.,LTD.

CUSTOMER DRAWING

| REV. | DESCRIPTION | MDF'D | APP'D | DATE |
|------|--|-------|-------|------------|
| 01 | INITIAL DESIGN | Brown | Matsu | 08/28/2012 |
| 02 | ADD RECOMMENDED PRINTED CIRCUIT BOARD & JPC LOGO | Brown | Matsu | 03/24/2014 |
| 03 | | | | |



ALL OTHER M/B APPLICATIONS

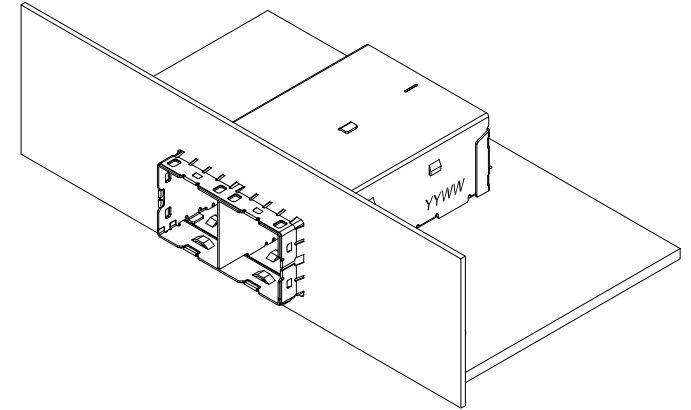
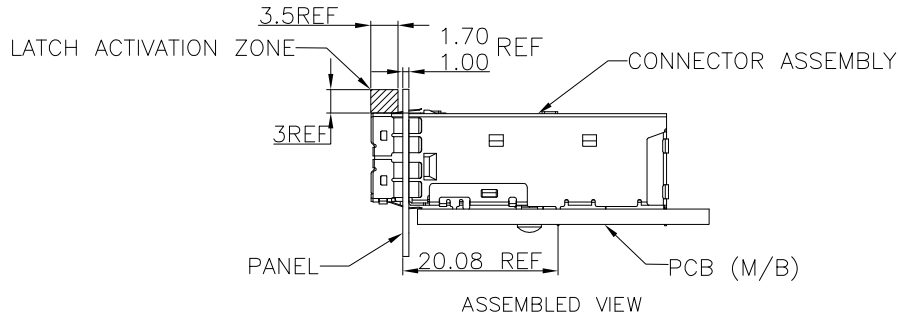
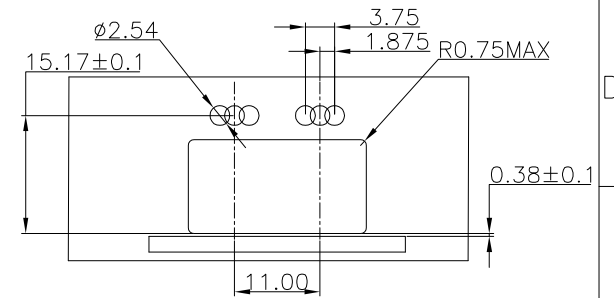
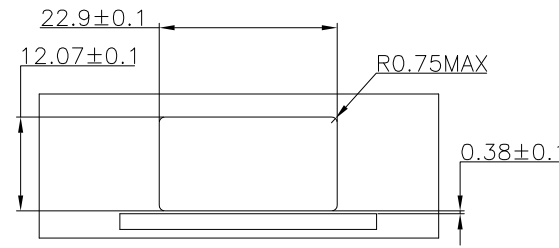
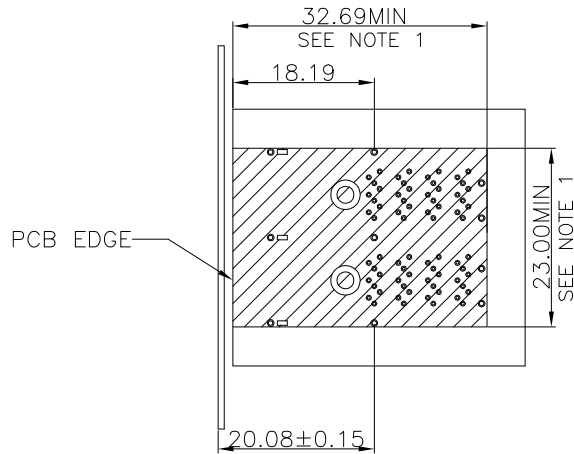


ILLUSTRATION OF ALL OTHER M/B BRACKET APPLICATION



NOTE:
1. CONNECTOR KEEP OUT AREA

| | | | | | | | | | | |
|-----------------------|---------------------|--|------------|------------------|--------------------------------------|--|-----------------|---------------------------------------|-------------------------|---------|
| ROHS COMPLIANT | HALOGEN FREE | Unit : mm | PROJECTION | | JESS-LINK PRODUCTS CO.,LTD. | | D.R. 08/28/2012 | TITLE SFF 8644 EXTERNAL HD COMBO TYPE | PRODUCT NO. OR LAYOUT | |
| | | GENERAL TOLERANCES: (UNLESS SPECIFIED) | | | | | | | | |
| | | 0 = ±.45 | D.R. Brown | CH.K 08/28/2012 | CONNECTOR(STANDARD W/STOPS 1X2 PORT) | | SCALE 1:1 | SIZE A4 | PART NO. P9212C03000T-0 | REV. 02 |
| | | 0.0 = ±.30 | James | APV.D 08/28/2012 | | | | | | |
| 0.00 = ±.20 | Matsu | | | | | | | | | |
| 0.000 = ±.10 | | | | | | | | | | |
| 0° = ± 2' | | | | | | | | | | |
| 0.0° = ± 1' | | | | | | | | | | |

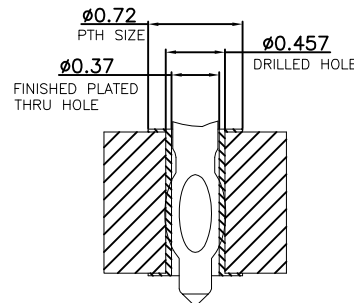
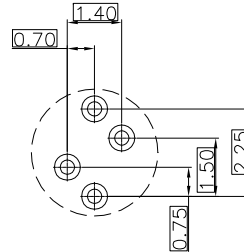
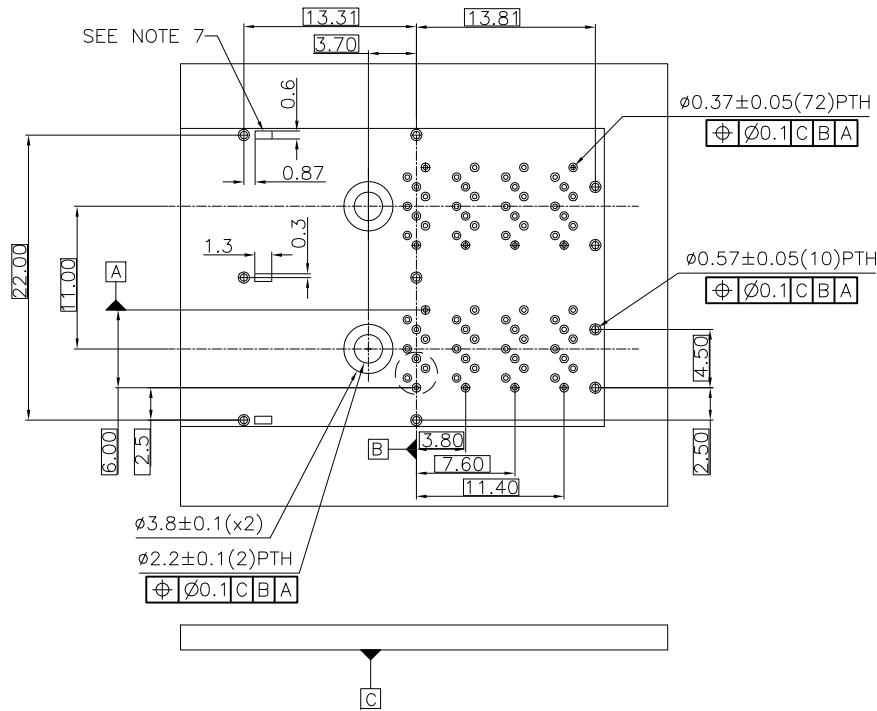
THIS DRAWING AND THE DATA DISCLOSED HEREIN OR HEREWITH IS NOT TO BE REPRODUCED USED OR DISCLOSED IN WHOLE OR IN PART TO ANYONE WITHOUT THE PERMISSION OF JESS-LINK PRODUCTS CO.,LTD.

CUSTOMER DRAWING

| REV. | DESCRIPTION | MDF'D | APP'D | DATE |
|------|--|-------|-------|------------|
| 01 | INITIAL DESIGN | Brown | Matsu | 08/28/2012 |
| 02 | ADD RECOMMENDED PRINTED CIRCUIT BOARD & JPC LOGO | Brown | Matsu | 03/24/2014 |
| 03 | | | | |

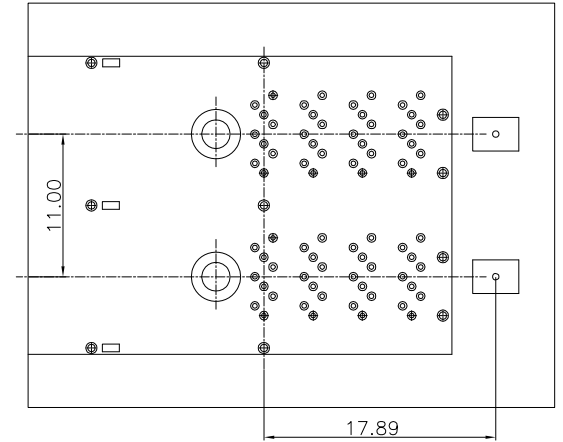


RECOMMENDED FOOTPRINT

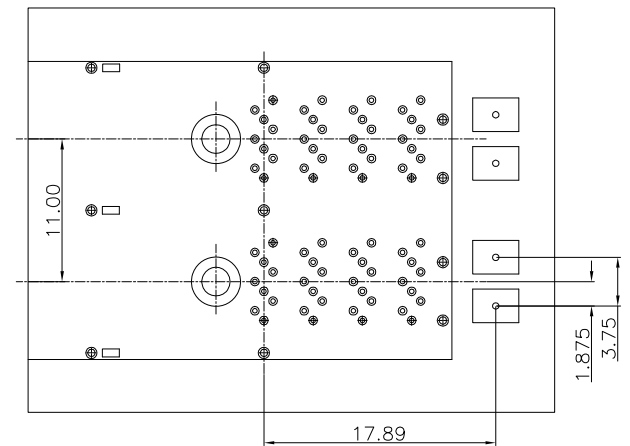


PRINTED CIRCUIT BOARD RECOMMENDED

RECOMMENDED FOOTPRINT (FOR SINGLE PORT LIGHT PIPE)



RECOMMENDED FOOTPRINT (FOR DUAL PORT LIGHT PIPE)



- NOTE:
- 1.RECOMMENDED DRILL SIZE AND ANNULAR RING FOR A $\phi 0.37$ FINISHED PTH REFER TO PRINTED CIRCUIT BOARD RECOMMENDED
 - 2.MINIMUM RECOMMENED SPACING: 14.00mm
 - 3.MINIMUM PCB THICKNESS S: 1.57mm
 - 4.RECOMMENDED DEILL SIZE FOR A $\phi 0.57$ FINISHED PTH IS $\phi 0.66$
 - 5.RECOMMENDED ANNULAR RING AROUND A $\phi 0.57$ FINISHED PTH IS $\phi 0.91$
 - 6.CAGE STAND OFF AREA. NO TRACES ON SURFACE OF PCB IN THESE AREAS

| | | | | | |
|--|--|---|---|----------------------------|--------------------------|
| ROHS COMPLIANT HALOGEN FREE | Unit : mm | PROJECTION | JESS-LINK PRODUCTS CO.,LTD. | | PRODUCT NO. OR LAYOUT |
| | GENERAL TOLERANCES: (UNLESS SPECIFIED) 0 = ± 0.45 0.0 = ± 0.30 0.00 = ± 0.20 0.000 = ± 0.10 0° = $\pm 2'$ 0.0° = $\pm 1'$ | | | | |
| | D.R. Brown 08/28/2012 | CH.K James 08/28/2012 APV.D Matsu 08/28/2012 | SCALE 1:2 SIZE A4 PART NO. P9212C03000T-0 | REV. 02 SH,T NO.5 OF 10 | |
| | SCALE 1:2 SIZE A4 PART NO. P9212C03000T-0 | | REV. 02 SH,T NO.5 OF 10 | | |

THIS DRAWING AND THE DATA DISCLOSED HEREIN OR HEREWITH IS NOT TO BE REPRODUCED USED OR DISCLOSED IN WHOLE OR IN PART TO ANYONE WITHOUT THE PERMISSION OF JESS-LINK PRODUCTS CO.,LTD.

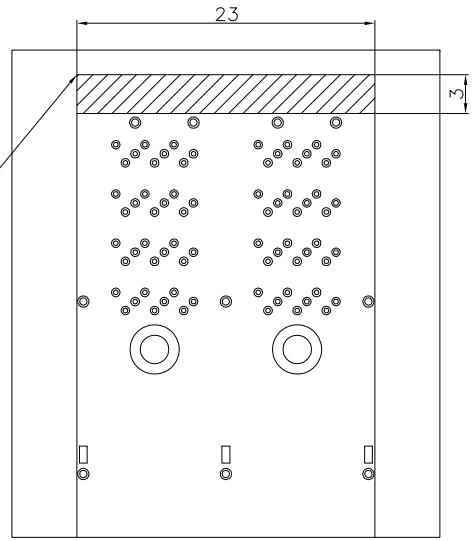
CUSTOMER DRAWING

| REV. | DESCRIPTION | MDF'D | APP'D | DATE |
|------|--|-------|-------|------------|
| 01 | INITIAL DESIGN | Brown | Matsu | 08/28/2012 |
| 02 | ADD RECOMMENDED PRINTED CIRCUIT BOARD & JPC LOGO | Brown | Matsu | 03/24/2014 |
| 03 | | | | |

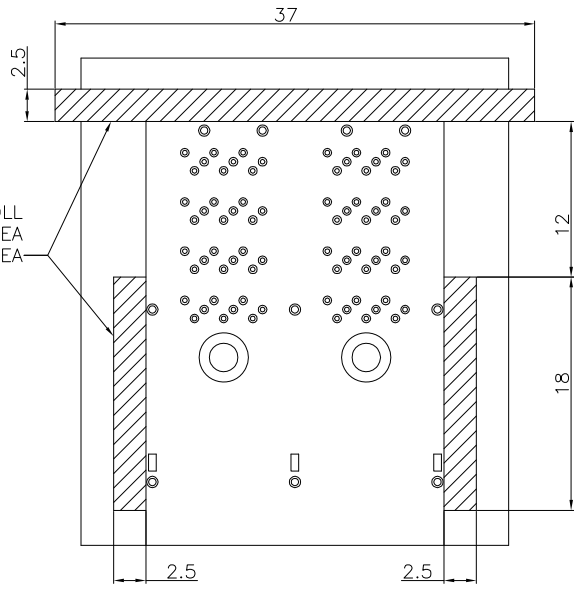


RECOMMENDED TOLLING KEEP OUT AREAS

RECOMMENDED INSERTION TOLL
KPP OUT AREA
NO COMPONENTS IN THIS AREA
MORE THAN 7.50mm TALL



RECOMMENDED INSERTION TOLL
KPP OUT AREA
NO COMPONENTS IN THIS AREA



| | | | | | | | |
|-----------------------|---------------------|--|-----------------|---------------------------------------|------------------------------------|--|-----------------------|
| ROHS COMPLIANT | HALOGEN FREE | Unit : mm | PROJECTION | | JESS-LINK PRODUCTS CO.,LTD. | | PRODUCT NO. OR LAYOUT |
| | | GENERAL TOLERANCES: (UNLESS SPECIFIED) | | | | | |
| | | 0 = ±.45 | D.R. 08/28/2012 | TITLE SFF 8644 EXTERNAL HD COMBO TYPE | REV. 02 | | |
| | | 0.0 = ±.30 | Brown | CONNECTOR(STANDARD W/STOPS 1X2 PORT) | | | |
| 0.00 = ±.20 | CH.K 08/28/2012 | SCALE SIZE PART NO. | SH,T NO.6 OF 10 | | | | |
| 0.000 = ±.10 | James | 1:2 A4 P9212C03000T-0 | | | | | |
| 0" = ±.2" | APV.D 08/28/2012 | Matsu | | | | | |
| 0.0" = ±.1" | | | | | | | |

THIS DRAWING AND THE DATA DISCLOSED HEREIN OR HEREWITH IS NOT TO BE REPRODUCED USED OR DISCLOSED IN WHOLE OR IN PART TO ANYONE WITHOUT THE PERMISSION OF JESS-LINK PRODUCTS CO.,LTD.

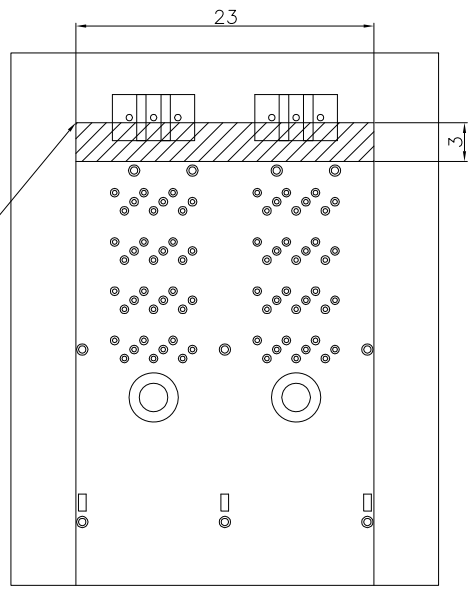
CUSTOMER DRAWING

| REV. | DESCRIPTION | MDF'D | APP'D | DATE |
|------|--|-------|-------|------------|
| 01 | INITIAL DESIGN | Brown | Matsu | 08/28/2012 |
| 02 | ADD RECOMMENDED PRINTED CIRCUIT BOARD & JPC LOGO | Brown | Matsu | 03/24/2014 |
| 03 | | | | |

RECOMMENDED TOLLING KEEP OUT AREAS
(FOR LIGHT PIPE)

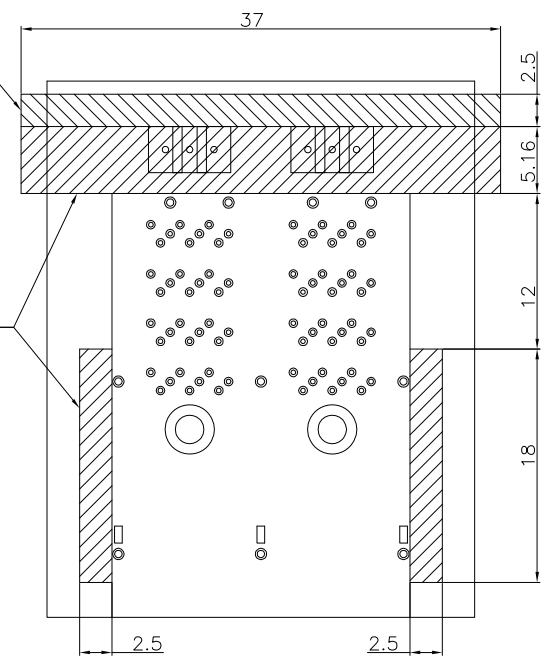


RECOMMENDED INSERTION TOLL
KPP OUT AREA
NO COMPONENTS IN THIS AREA
MORE THAN 7.50mm TALL



RECOMMENDED INSERTION TOLL
KPP OUT AREA
NO COMPONENTS IN THIS AREA

RECOMMENDED INSERTION TOLL
KPP OUT AREA
NO COMPONENTS IN THIS AREA
MORE THAN 5.00 mm TALL



| | | | | | | | | |
|-----------------------|---------------------|---|------------|------------|--------------------------------------|-----------------------------|--------------------------|---------|
| ROHS COMPLIANT | HALOGEN FREE | Unit : mm | PROJECTION | | JESS-LINK PRODUCTS CO.,LTD. | | PRODUCT NO. OR LAYOUT | |
| | | GENERAL TOLERANCES: (UNLESS SPECIFIED) | | | | | | |
| | | 0 = ±.45 | D.R. | 08/28/2012 | TITLE | 8644 EXTERNAL HD COMBO TYPE | | REV. 02 |
| | | 0.0 = ±.30 | Brown | 08/28/2012 | CONNECTOR(STANDARD W/STOPS 1X2 PORT) | | SH,T NO.7 OF 10 | |
| 0.00 = ±.20 | CH.K | 08/28/2012 | SCALE | SIZE | PART NO. | | | |
| 0.000 = ±.10 | James | | 1:2 | A4 | P9212C03000T-0 | | | |
| 0° = ± 2° | APV.D | 08/28/2012 | | | | | | |
| 0.0° = ± 1° | Matsu | | | | | | | |

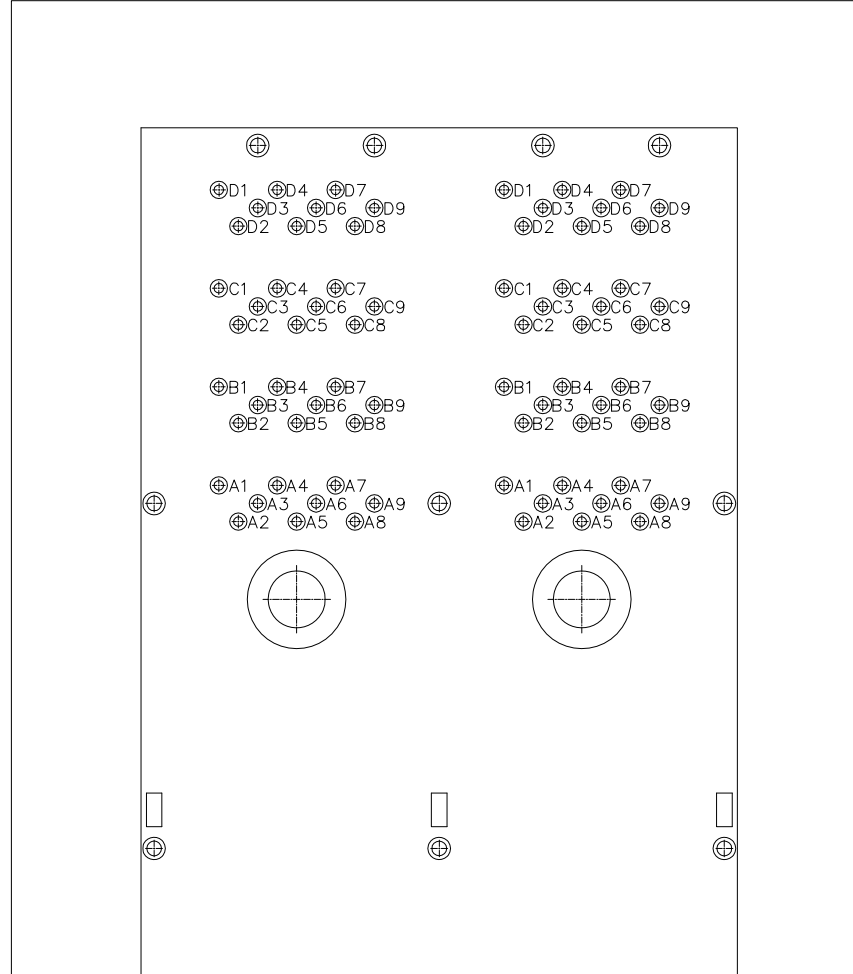
THIS DRAWING AND THE DATA DISCLOSED HEREIN OR HEREWITH IS NOT TO BE REPRODUCED USED OR DISCLOSED IN WHOLE OR IN PART TO ANYONE WITHOUT THE PERMISSION OF JESS-LINK PRODUCTS CO.,LTD.

CUSTOMER DRAWING

| REV. | DESCRIPTION | MDF'D | APP'D | DATE |
|------|--|-------|-------|------------|
| 01 | INITIAL DESIGN | Brown | Matsu | 08/28/2012 |
| 02 | ADD RECOMMENDED PRINTED CIRCUIT BOARD & JPC LOGO | Brown | Matsu | 03/24/2014 |
| 03 | | | | |



PIN OUT DESIGNATIONS

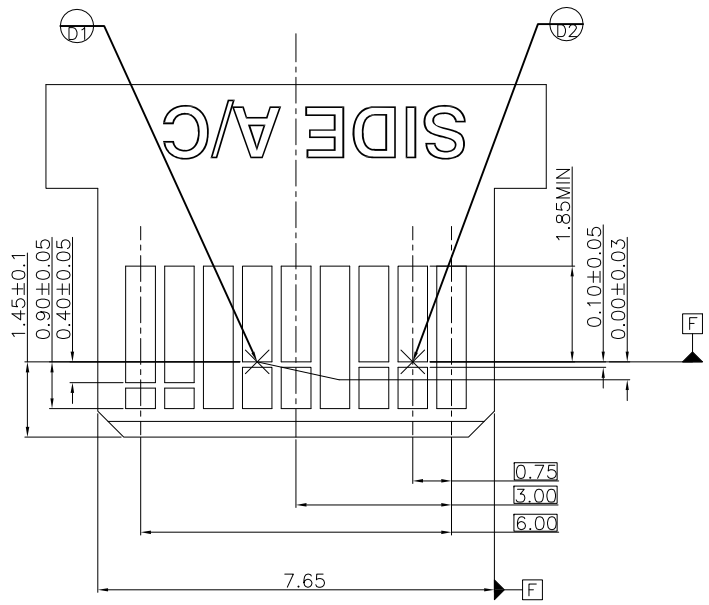
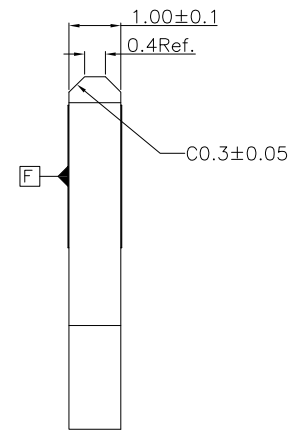
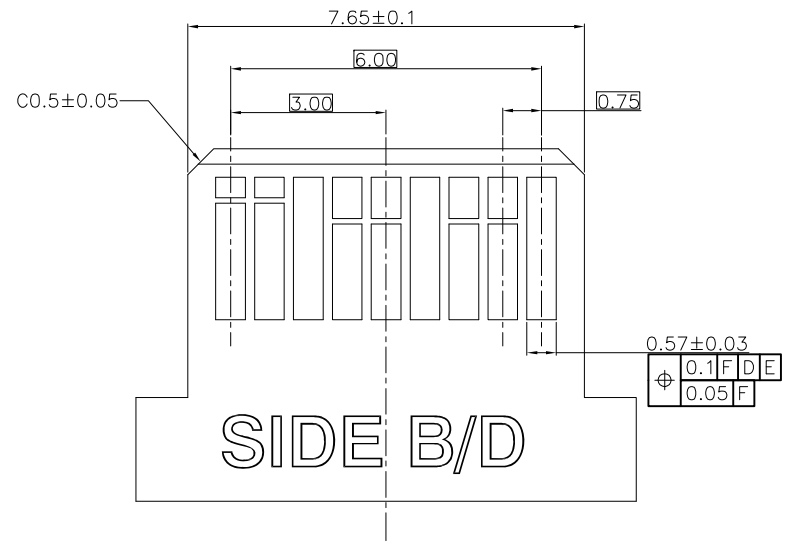


| | | | | | | |
|-----------------------|---------------------|--|-----------------|---------------------------------------|---------------------|-----------------------|
| ROHS COMPLIANT | HALOGEN FREE | Unit : mm | PROJECTION | JESS-LINK PRODUCTS CO.,LTD. | | PRODUCT NO. OR LAYOUT |
| | | GENERAL TOLERANCES: (UNLESS SPECIFIED) | | | | |
| | | 0 = ±.45 | D.R. 08/28/2012 | TITLE SFF 8644 EXTERNAL HD COMBO TYPE | SCALE SIZE PART NO. | REV. 02 |
| | | 0.0 = ±.30 | CH.K 08/28/2012 | CONNECTOR(STANDARD W/STOPS 1X2 PORT) | | |
| 0.000 = ±.20 | James | | | | | |
| 0" = ±.10 | APV.D 08/28/2012 | | | | | |
| 0.0' = ± 2" | Matsu | | | | | |
| 0.0' = ± 1" | | | | | | |

THIS DRAWING AND THE DATA DISCLOSED HEREIN OR HEREWITH IS NOT TO BE REPRODUCED USED OR DISCLOSED IN WHOLE OR IN PART TO ANYONE WITHOUT THE PERMISSION OF JESS-LINK PRODUCTS CO.,LTD.

CUSTOMER DRAWING

| REV. | DESCRIPTION | MDF'D | APP'D | DATE |
|------|--|-------|-------|------------|
| 01 | INITIAL DESIGN | Brown | Matsu | 08/28/2012 |
| 02 | ADD RECOMMENDED PRINTED CIRCUIT BOARD & JPC LOGO | Brown | Matsu | 03/24/2014 |
| 03 | | | | |



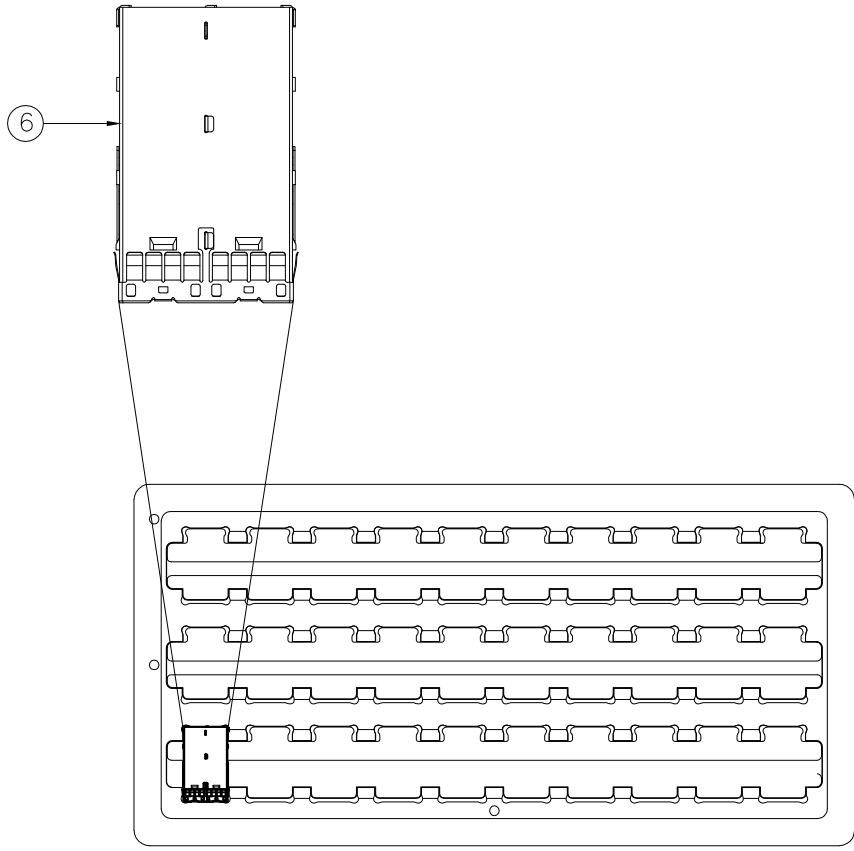
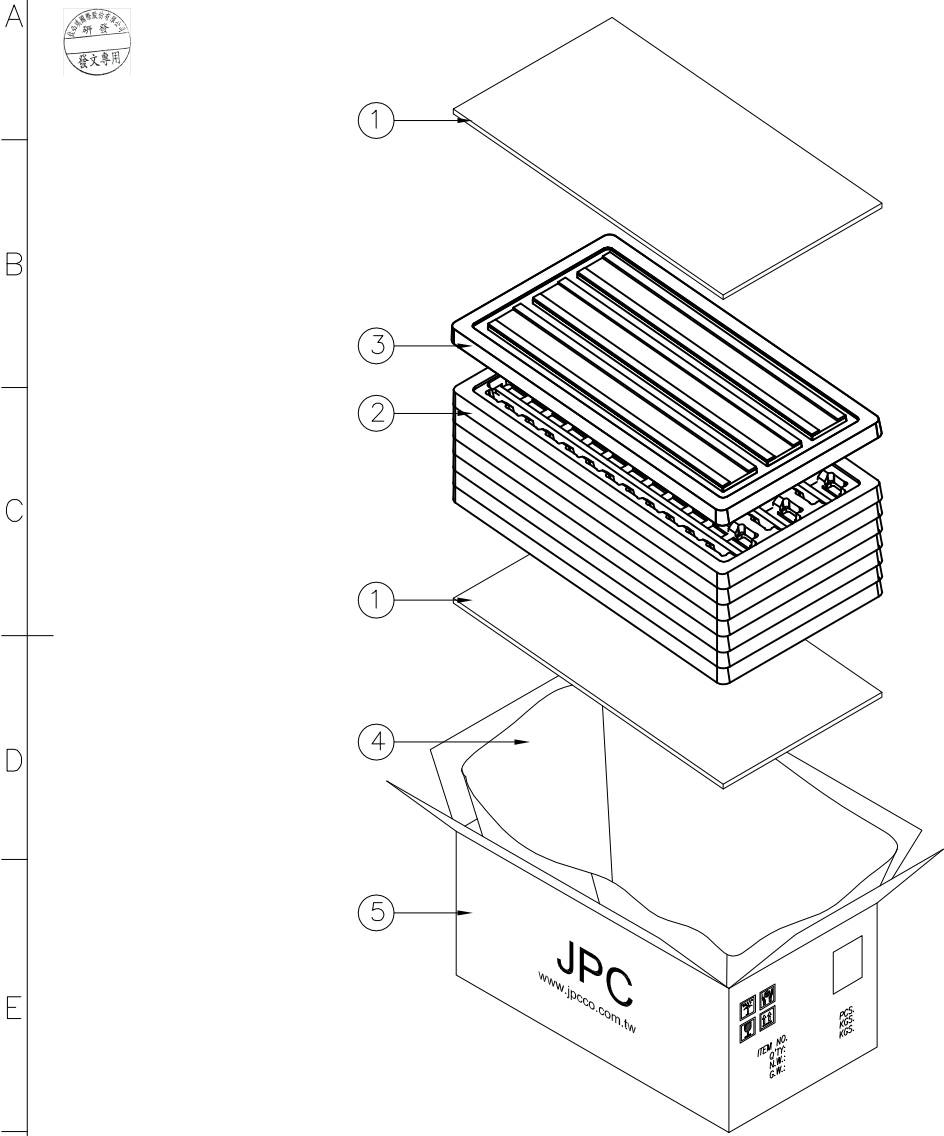
NOTE:
 1. 0.05 MINIMUM KEEP OUT FOR SOLDER MASK AROUND ALL PADS
 2. DATUM D TARGETS ARE DEFINED BY THE RESPECTIVE PAD CENTER LINES AND THE LEADING EDGE OF THE TARGET PADS

| | | | | | | | |
|-----------------------|---------------------|--|-----------------|---------------------------------------|--------------------------------------|-----------------|-----------------------|
| ROHS COMPLIANT | HALOGEN FREE | Unit : mm | PROJECTION | | JESS-LINK PRODUCTS CO.,LTD. | | PRODUCT NO. OR LAYOUT |
| | | GENERAL TOLERANCES: (UNLESS SPECIFIED) | | | | | |
| | | 0 = ±.45 | D.R. 08/28/2012 | TITLE SFF 8644 EXTERNAL HD COMBO TYPE | CONNECTOR(STANDARD W/STOPS 1X2 PORT) | REV. 02 | |
| | | 0.0 = ±.30 | Brown | | | | |
| 0.00 = ±.20 | CH.K 08/28/2012 | James | SCALE 1:2 | SIZE A4 | PART NO. P9212C03000T-0 | SH,T NO.9 OF 10 | |
| 0.000 = ±.10 | APV.D 08/28/2012 | Matsu | | | | | |
| 0° = ± 2' | | | | | | | |
| 0.0° = ± 1' | | | | | | | |

THIS DRAWING AND THE DATA DISCLOSED HEREIN OR HEREWITH IS NOT TO BE REPRODUCED USED OR DISCLOSED IN WHOLE OR IN PART TO ANYONE WITHOUT THE PERMISSION OF JESS-LINK PRODUCTS CO.,LTD.

CUSTOMER DRAWING

| REV. | DESCRIPTION | MDF'D | APP'D | DATE |
|------|--|-------|-------|------------|
| 01 | INITIAL DESIGN | Brown | Matsu | 08/28/2012 |
| 02 | ADD RECOMMENDED PRINTED CIRCUIT BOARD & JPC LOGO | Brown | Matsu | 03/24/2014 |
| 03 | | | | |



| ITEM | DESCRIPTION | Q'TY |
|------|---|------|
| 7 | | |
| 6 | CONNECTOR | 240 |
| 5 | MASTER CARTON, 405X220X185 mm | 1 |
| 4 | WATERROOF BAG, 400X(107.5+107.5)X415 mm | 1 |
| 3 | TOP TRAY, PET, 370X196X17.8 mm (30Pcs. / Tray) | 9 |
| 2 | BOTTOM TRAY, PET, 370X196X17.8 mm (30Pcs. / Tray) | 8 |
| 1 | PAPER PAD, 385X200X3mm | 2 |

| | | | | | | | |
|--|---|-----------------------|-----------------------|------------------------------------|----------------|--------------------------------------|------------------|
| ROHS COMPLIANT HALOGEN FREE | Unit : mm | PROJECTION | | JESS-LINK PRODUCTS CO.,LTD. | | PRODUCT NO. OR LAYOUT | |
| | GENERAL TOLERANCES: (UNLESS SPECIFIED) | | | | | | TITLE |
| | 0 = ±.45 0.0 = ±.30 0.00 = ±.20 0.000 = ±.10 0" = ± .2" 0.0" = ± .1" | D.R. Brown 08/28/2012 | CH.K James 08/28/2012 | APV.D Matsu 08/28/2012 | TITLE | CONNECTOR(STANDARD W/STOPS 1X2 PORT) | REV. 02 |
| | | SCALE | SIZE | PART NO. | P9212C03000T-0 | | SH,T NO.10 OF 10 |