

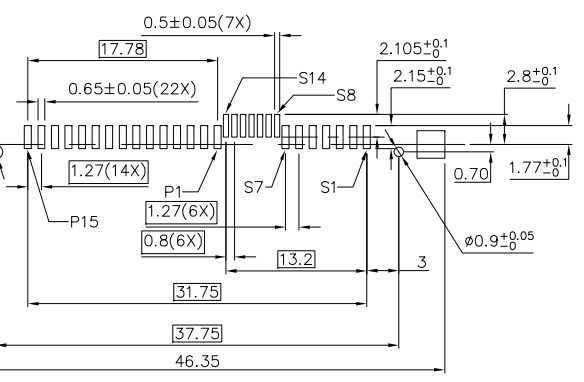
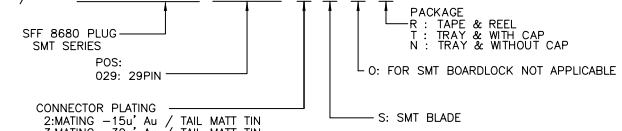
THIS DRAWING AND THE DATA DISCLOSED HEREIN OR HEREWITH IS NOT TO BE REPRODUCED USED OR DISCLOSED IN WHOLE OR IN PART TO ANYONE WITHOUT THE PERMISSION OF JESS-LINK PRODUCTS CO.,LTD.

CUSTOMER DRAWING

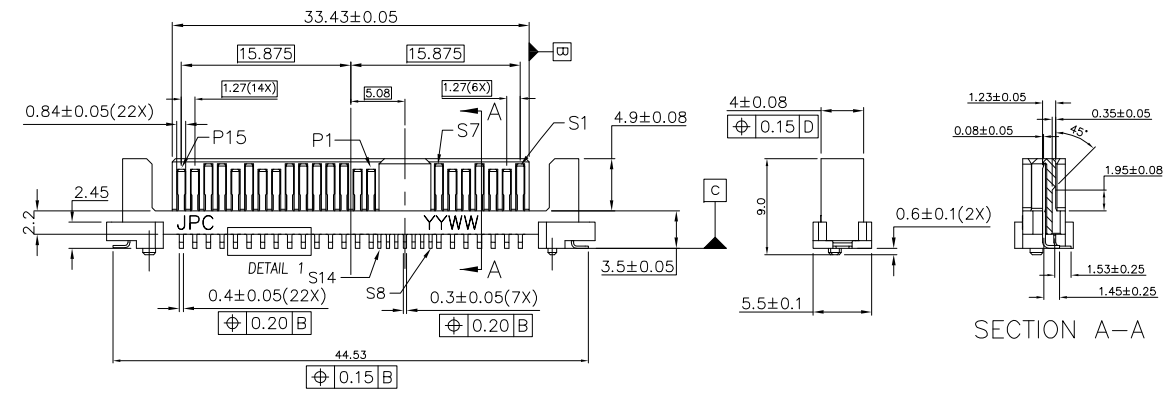
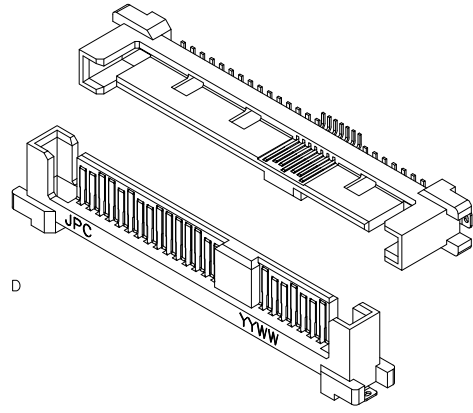
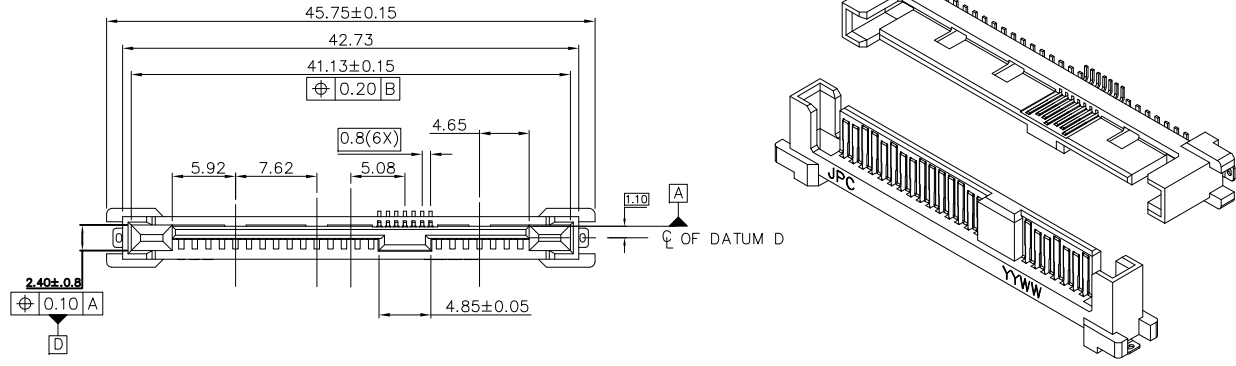
REV.	DESCRIPTION	MDF'D	APP'D	DATE
02	MODIFY POSITION	Brown	Matsu	03/26/2015
03	TAPE AND RELL QUANTITY 450PCS-->400PCS	Brown	Matsu	06/25/2015
04	MODIFY DRAWING	Brown	James	09/12/2016

NOTE:

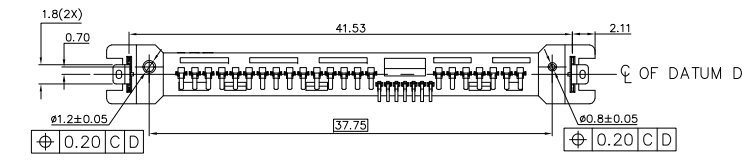
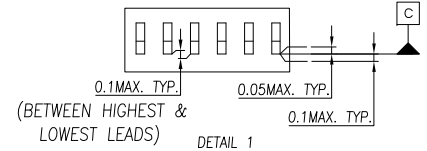
- MATERIAL:
HOUSING/CAP: HI-TEMP THERMOPLASTIC UL 94V-0 BLACK
TERMINAL/SOLDER TAB: COPPER ALLOY
- PLATING:
TERMINAL: 15u" MIN GOLD ON MATING AREA
100u" MIN MATTE TIN ON SOLDER AREA
50u" MIN NICKEL UNDERPLATE ALL OVER
SOLDER TAB: 50u" MIN NICKEL UNDERPLATE OVER
100u" MIN MATTE TIN ALL OVER
- MAXIMUM WARPAGE OF 0.13mm OVER THE LENGTH OF CONNECTOR IN ANY DIRECTION BEFORE AND AFTER EXPOSURE TO MAX.260°C FOR 10 SECONDS.
- PACKAGE: TAPE & REEL
- DATE CODE: YYWW
YY=YEAR OF MANUFACTURE
WW=WEEK OF MANUFACTURE
- P/N:MARTAX:
JPC P/N: P 9 2 7 F 0 2 9 2 S 0 R - 0



RECOMMENDED PCB LAYOUT



SECTION A-A

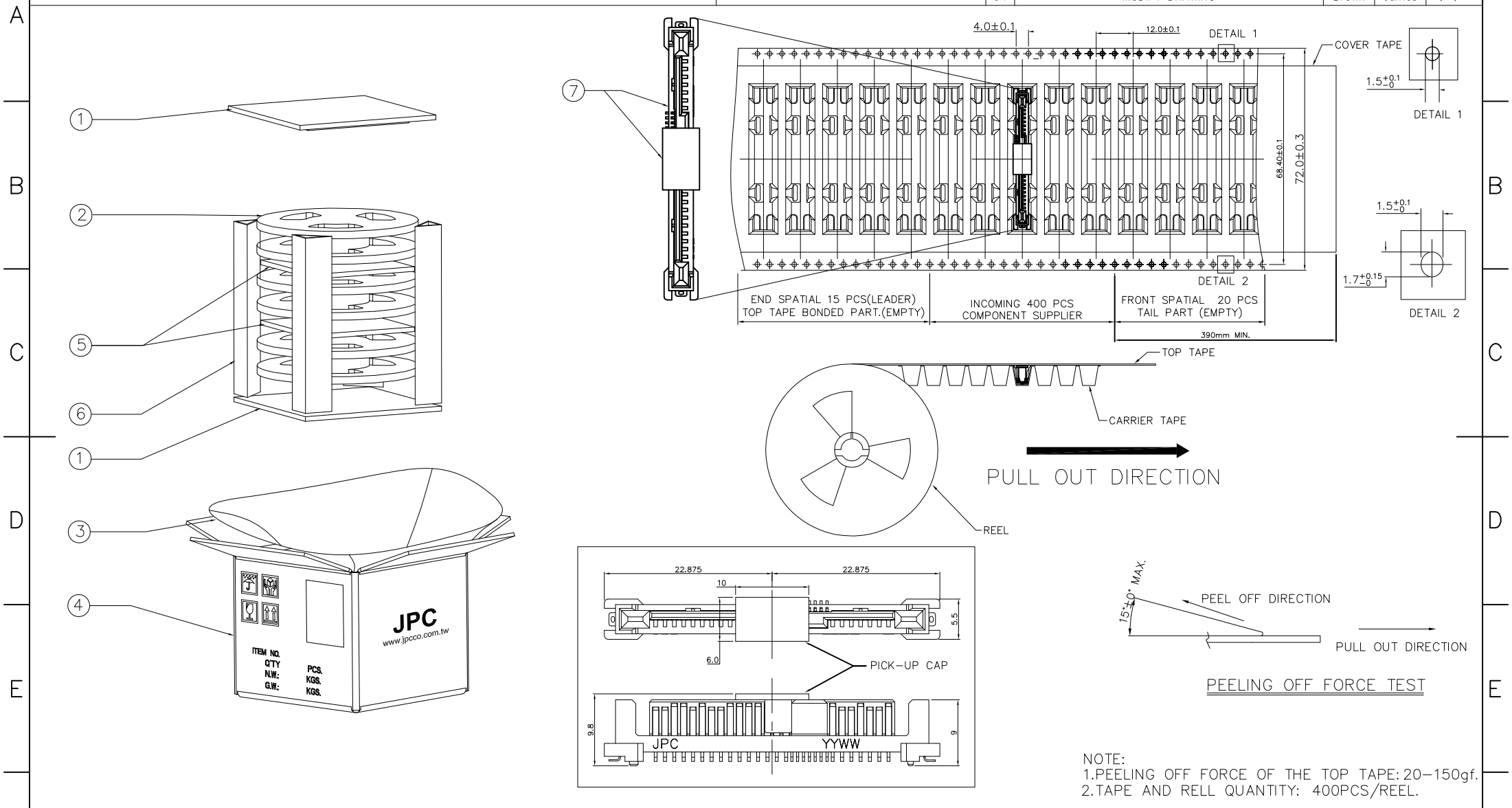


RoHS COMPLIANT HALOGEN FREE	Unit : mm	PROJECTION		JPC JESS-LINK PRODUCTS CO., LTD.		PRODUCT NO. OR LAYOUT C15H0305A	
	GENERAL TOLERANCES: (UNLESS SPECIFIED)	D.R. 02/04/2015 Brown					TITLE SFF 8680 SAS 29PIN CONNECTOR (PLUG,VERTICAL SMT)
	0 = ±.30	0.0 = ±.20	CH.K 02/04/2015 James		SCALE SIZE N/A A4	PART NO. P927F0292S0R-0	
	0.00 = ±.10	0.000 = ±.05	APV.D 02/04/2015 Matsu				

THIS DRAWING AND THE DATA DISCLOSED HEREIN OR HEREWITH IS NOT TO BE REPRODUCED USED OR DISCLOSED IN WHOLE OR IN PART TO ANYONE WITHOUT THE PERMISSION OF JESS-LINK PRODUCTS CO.,LTD.

CUSTOMER DRAWING

REV.	DESCRIPTION	MDF'D	APP'D	DATE
02	MODIFY POSITION	Brown	Matsu	03/26/2015
03	TAPE AND RELL QUANTITY 450PCS-->400PCS	Brown	Matsu	06/25/2015
04	MODIFY DRAWING	Brown	James	09/12/2016



NOTE:
 1. PEELING OFF FORCE OF THE TOP TAPE: 20-150gf.
 2. TAPE AND RELL QUANTITY: 400PCS/REEL.

ITEM	DESCRIPTION	Q'TY
8		
7	SFF 8680 SAS 29PIN PLUG CONNECTOR & PICK-UP CAP	1200
6	EDGE BOARD ,370X125X5mm	4
5	BUBBLE BAG ,325X325X5mm	2
4	MASTER CARTON , 332X332X260 mm	1
3	WATERPROOF PE BAG , 500X(175+175)X600 mm	1
2	TAPE & REEL 13"	3
1	PAPER PAD , 325X325X5 mm	2

ROHS COMPLIANT HALOGEN FREE	Unit : mm	PROJECTION		JPC JESS-LINK PRODUCTS CO., LTD.		
	GENERAL TOLERANCES: (UNLESS SPECIFIED)					
	0 = ±.30	D.R.	02/04/2015	TITLE	SFF 8680 SAS 29PIN CONNECTOR (PLUG, VERTICAL SMT)	PRODUCT NO. OR LAYOUT C15H0305A
	0.0 = ±.20	CH.K	02/04/2015	SCALE	N/A	REV. 04
0.00 = ±.10	James		SIZE	A4		
0.000 = ±.05	APV.D	02/04/2015	PART NO.	P927F0292S0R-0		
0° = ± 1°	Matsu				SH,T NO. 20F2	
0.0° = ±.50°						