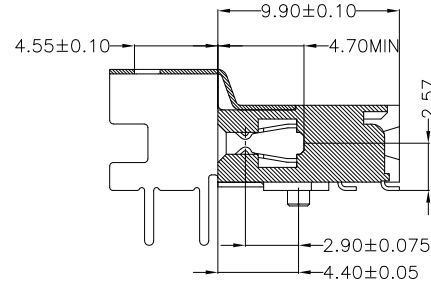
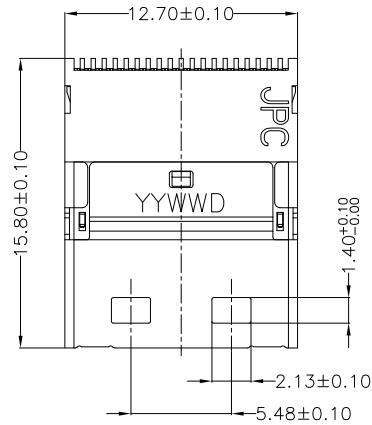


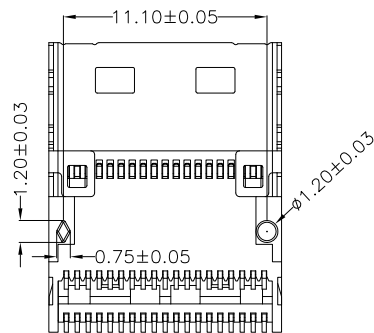
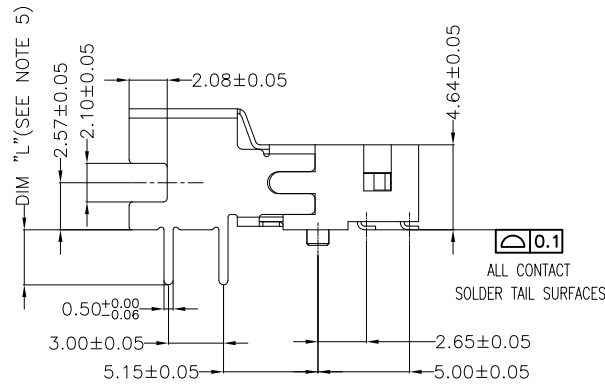
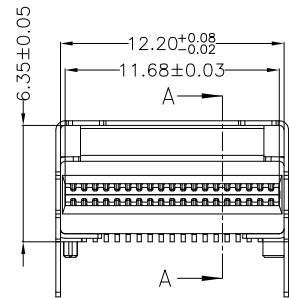
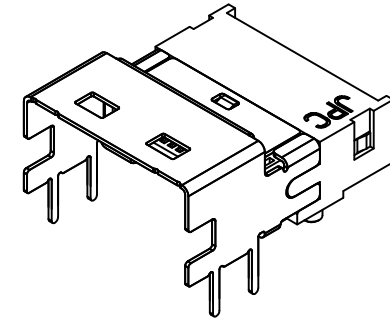
THIS DRAWING AND THE DATA DISCLOSED HEREIN OR HEREWITH IS NOT TO BE REPRODUCED USED OR DISCLOSED IN WHOLE OR IN PART TO ANYONE WITHOUT THE PERMISSION OF JESS-LINK PRODUCTS CO.,LTD.

CUSTOMER DRAWING

REV.	DESCRIPTION	MDF'D	APP'D	DATE
A1	INITIAL DESIGN	Colin	Ray	08/01/2017
A2	MODIFY PRODUCT DESCRIPTION	Colin	Ray	08/09/2017
A3	MODIFY PART NO.	Colin	Ray	11/03/2017



SECTION: A-A



NOTE:

- MATERIAL:  
HOUSING: HI-TEMP THERMOPLASTIC UL 94V-0 BLACK  
TERMINAL: COPPER ALLOY  
SHELL: STAINLESS STEEL
  - PLATING:  
TERMINAL: CONTACT & SOLDER AREA SEE JPC P/N MATRIX  
30u" MIN. NICKEL UNDERPLATE ALL OVER  
SHELL: 30u" MIN. NICKEL PLATED ALL OVER
  - DATE CODE: YYWWDD  
YY=THE LAST 2 DIGITS OF THE YEAR  
WW=WEEK OF MANUFACTURE  
D=DAY FOR WEEK
  - PACKAGE SPEC : SOP-PK-P934A038-D
  - JPC P/N MATRIX: P 9 3 4 A 0 3 8 \* \* N R - 0  

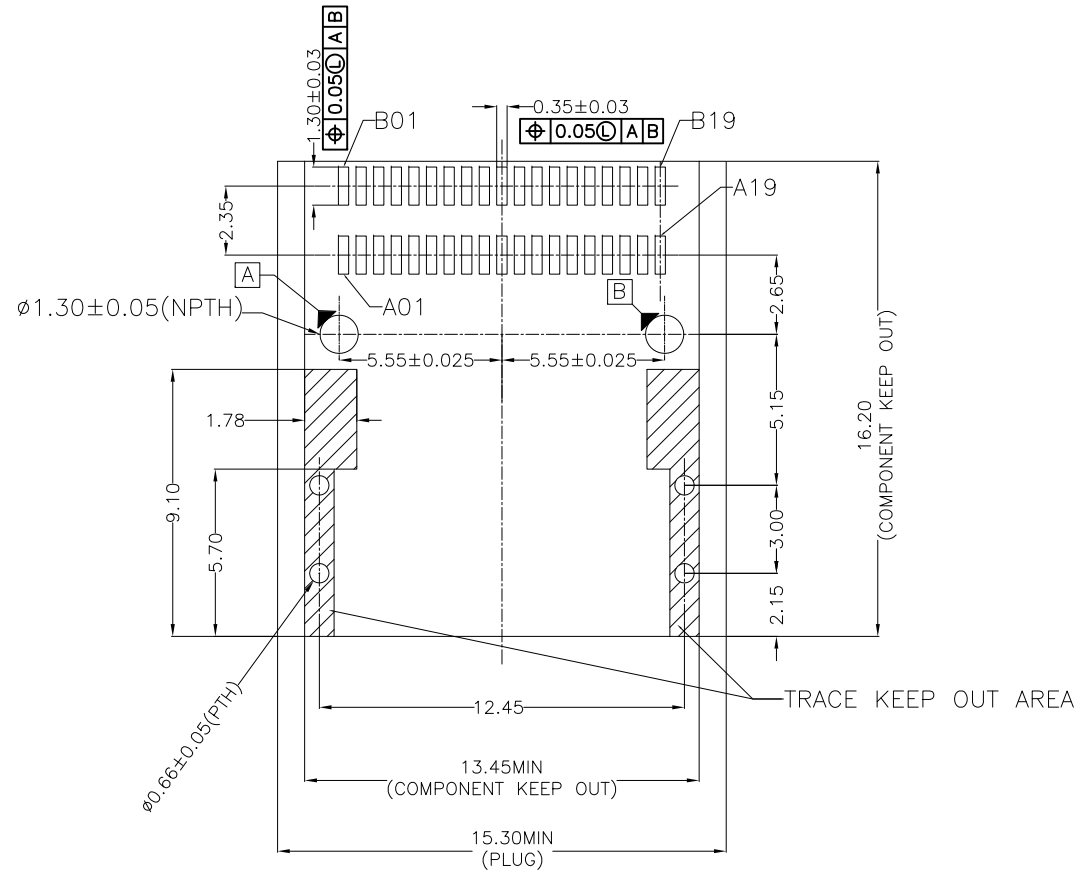
Thinline SAS 4i RECEPTACLE										OTHER
85 Ohm RIGHT ANGEL SMT SERIES										PACKAGE
SHELL ATTACH										R: TAPE & REEL W/Pitch 24mm
A: DIP TYPE										OPTIONAL:
										N: W/O CAP
- PLATING  
 2: MATING -15u" Au & G/F SOLDER AREA  
 3: MATING -30u" Au & G/F SOLDER AREA
- TAIL LENGTH=DIM "L"  
 1: DIP, L=3.0mm(For PCB:2.4-2.8mm)  
 2: DIP, L=1.5mm(For PCB:0.7-1.3mm)  
 3: DIP, L=2.2mm(For PCB:1.6-2.0mm)

<b>RoHS COMPLIANT</b>	<b>HALOGEN FREE</b>	Unit : mm	PROJECTION 		<b>JPC JESS-LINK PRODUCTS CO., LTD.</b>			PRODUCT NO. /LAYOUT C16H0341A
		GENERAL TOLERANCES: (UNLESS SPECIFIED)	D.R. 11/03/2017	TITLE Thinline SAS 4i Conn. (85u REC. R/A, SMT, DIP SHELL)				
		0 = ±.30	Colin	SCALE	SIZE	DWG NO.	REV.	
		0.0 = ±.20 0.00 = ±.10 0.000 = ±.05 0" = ± 1" 0.0" = ±.50"	CH.K 11/03/2017 Andrew APV.D 11/03/2017 Ray	2.5:1	A4	SD-P934A038-D	A3	SHEET 1 OF 2

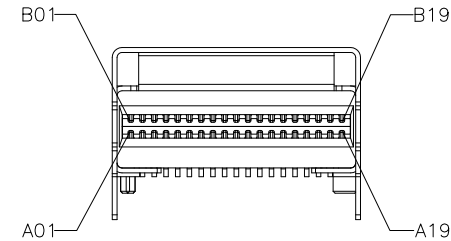
THIS DRAWING AND THE DATA DISCLOSED HEREIN OR HEREWITH IS NOT TO BE REPRODUCED USED OR DISCLOSED IN WHOLE OR IN PART TO ANYONE WITHOUT THE PERMISSION OF JESS-LINK PRODUCTS CO.,LTD.

CUSTOMER DRAWING

REV.	DESCRIPTION	MDF'D	APP'D	DATE
A1	INITIAL DESIGN	Colin	Ray	08/01/2017
A2	MODIFY PRODUCT DESCRIPTION	Colin	Ray	08/09/2017
A3	MODIFY PART NO.	Colin	Ray	11/03/2017



RECOMMENDED PCB LAYOUT  
 =====



PIN ASSIGNMENTS

<b>RoHS COMPLIANT</b>	<b>HALOGEN FREE</b>	Unit : mm	PROJECTION 		<b>JPC JESS-LINK PRODUCTS CO., LTD.</b>							
		GENERAL TOLERANCES: (UNLESS SPECIFIED)	D.R.	11/03/2017			TITLE	Thinline SAS 4i Conn. (85Ω REC. R/A, SMT, DIP SHELL)	PRODUCT NO. /LAYOUT	C16H0341A		
		0 = ±.30	Colin	11/03/2017	SCALE	N/A	SIZE	A4	DWG NO.	SD-P934A038-D	REV.	A3
		0.0 = ±.20	CH.K	11/03/2017	APV.D	Ray	11/03/2017			SHEET 2 OF 2		