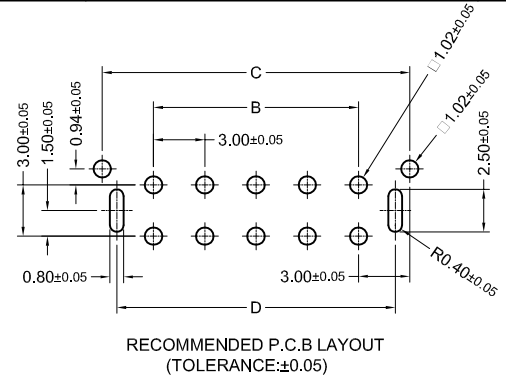
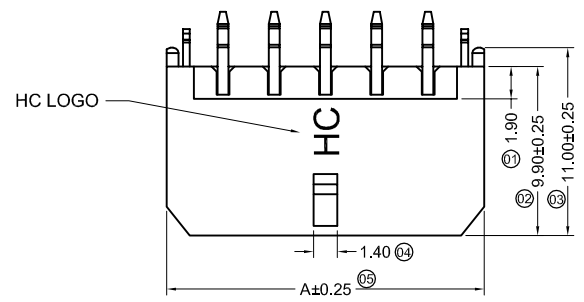


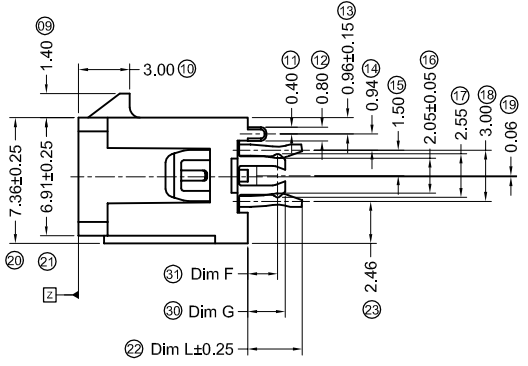
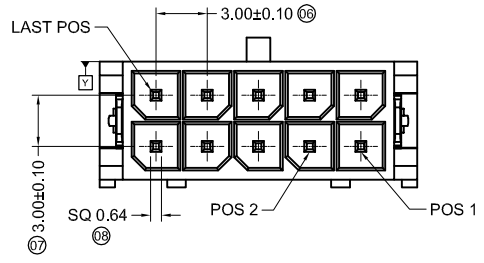
THIS DRAWING AND THE DATA DISCLOSED HEREIN OR HERewith IS NOT TO BE REPRODUCED USED OR DISCLOSED IN WHOLE OR IN PART TO ANYONE WITHOUT THE PERMISSION OF JESS-LINK PRODUCTS CO.,LTD.(JPC)

CUSTOMER DRAWING
DRWC-012013

REV.	ECN NO.	DESCRIPTION	MDF'D	APP'D	DATE
A1		INITIAL DESIGN	Colin	Andrew	08/20/2024

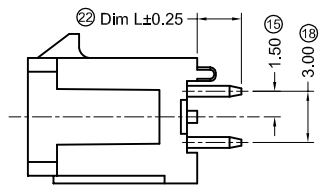
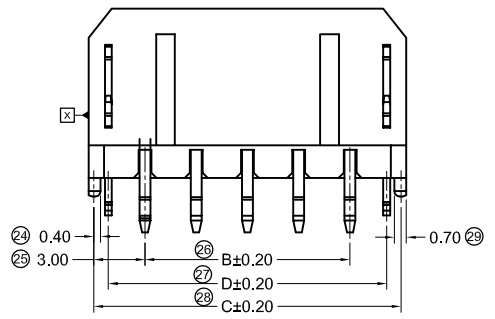


- Specifications :
- Voltage rating: 250V AC / DC
 - Current rating: 12.5A Max AC / DC
 - Withstanding voltage: 1000V AC/minute
 - Temperature range: -40°C~+105°C
 - Insulation resistance:≥1000MΩ
 - Contact resistance: ≤10mΩ
 - After environmental testing: ≤20mΩ
 - Material:
Pin-Brass; Plating-Gold Flash
Housing; LCP 94V-0 BK



PDH0001X02B0-1
NO. OF CIRCUIT

Poles	Dimensions(mm)			
	A	B	C	D
2	6.60	3.00	6.00	4.30
4	9.60	3.00	9.00	7.30
6	12.60	6.00	12.00	10.30
8	15.60	9.00	15.00	13.30
10	18.60	12.00	18.00	16.30
12	21.60	15.00	21.00	19.30
14	24.60	18.00	24.00	22.30
16	27.60	21.00	27.00	25.30
18	30.60	24.00	30.00	28.30
20	33.60	27.00	33.00	31.30
22	36.60	30.00	36.00	34.30
24	39.60	33.00	39.00	37.30



Special No	Dim L(mm)	Special No	Dim L(mm)	Special No	Dim L(mm)
P1 / P4	2.60	P7	2.80	P10	3.60
P / P2 / P3/P6	3.20	P8/P15	1.60	P11/P13	4.50
P5/P12	2.10	P9/P14	4.00		
Special No	Boardlock F(mm)	Boardlock G(mm)	P.C.B Layout	T(mm)	
Blank	1.75	2.20		1.60	
A	2.35	2.80		2.00-2.10	
A1	2.95	3.40		2.60-2.70	
A2	3.85	4.30		3.50-3.60	
A3	4.25	4.70		3.90-4.00	

ITEM	SUPL	SUPL PN	DESCRIPTION	Q'TY
1				
2				
3				
4				
5				

RoHS COMPLIANT
HALOGEN FREE

Unit: mm(inch)
GENERAL TOLERANCES: (UNLESS SPECIFIED)
0 = ±1 (0.039)
0.0 = ±.5 (0.02)
0.00 = ±.3 (0.012)
0.000 = ±.15(0.006)
0° = ± 2'
0.0° = ± 1'

PROJECTION
D.R. Colin
CH.K
APV.D

JPC connectivity

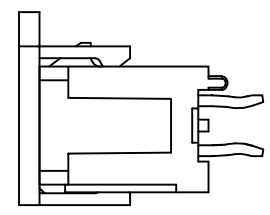
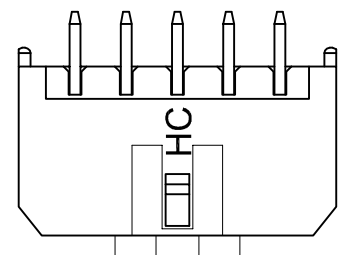
TITLE: 3.00mm Crimp Style Connectors
SCALE: 1:1
SIZE: A4
PART NO.: PDH0001X02B0-1

PD./FILE NO.
REV. A1
SHEET 1 OF 2

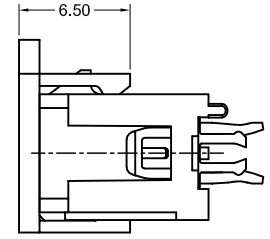
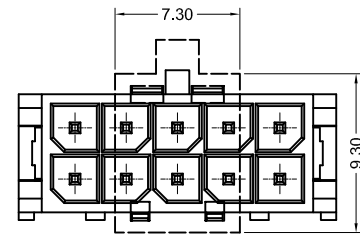
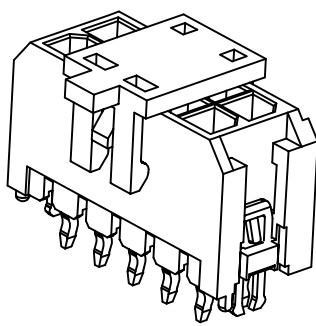
THIS DRAWING AND THE DATA DISCLOSED HEREIN OR HEREWITH IS NOT TO BE REPRODUCED USED OR DISCLOSED IN WHOLE OR IN PART TO ANYONE WITHOUT THE PERMISSION OF JESS-LINK PRODUCTS CO.,LTD.(JPC)

CUSTOMER DRAWING
DRWC-012013

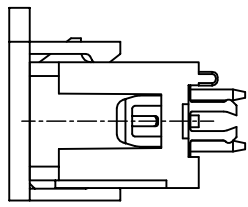
REV.	ECN NO.	DESCRIPTION	MDF'D	APP'D	DATE
A1		INITIAL DESIGN	Colin	Andrew	08/20/2024



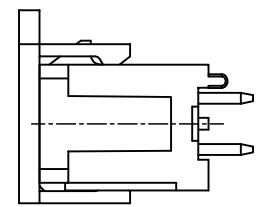
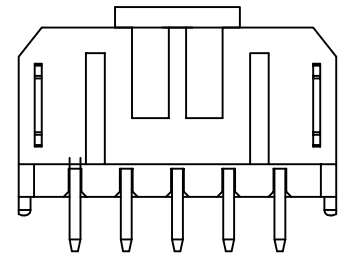
With CAP/ With Post / Without Boardlock
With kink



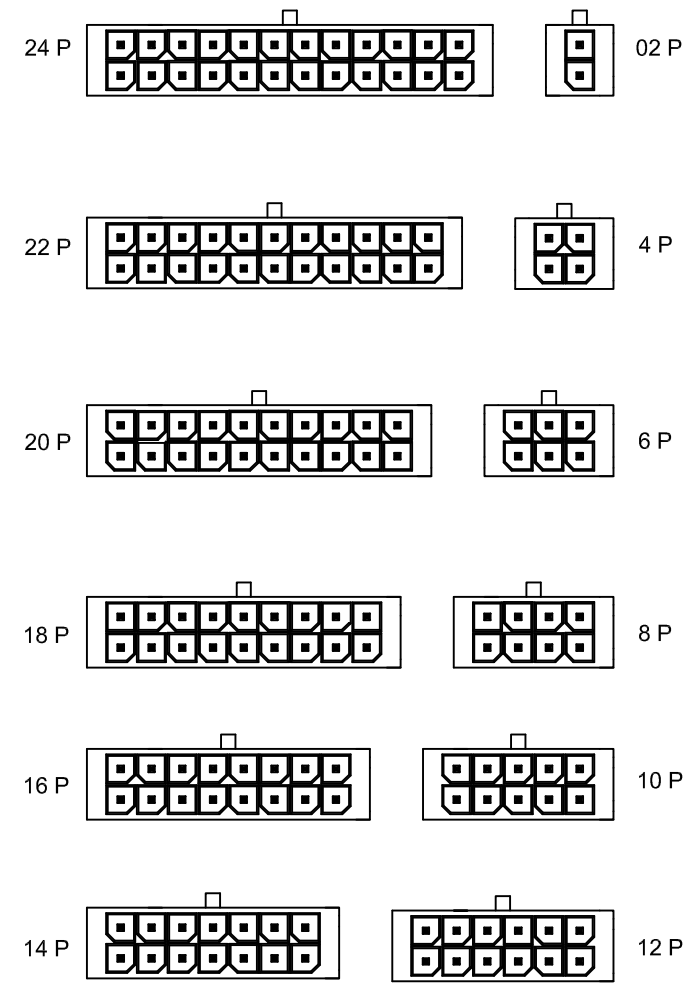
With CAP/ With Post / With Boardlock
With kink



With CAP/ With Post / With Boardlock
Without kink



With CAP/ With Post / Without Boardlock
Without kink



ITEM	SUPL	SUPL PN	DESCRIPTION	Q'TY

RoHS COMPLIANT	HALOGEN FREE	Unit: mm(inch)	PROJECTION 		JPC connectivity	
		GENERAL TOLERANCES: (UNLESS SPECIFIED) 0 = ±1 (0.039) 0.0 = ±.5 (0.02) 0.00 = ±.3 (0.012) 0.000 = ±.15(0.006) 0° = ± 2' 0.0° = ± 1'				
		SCALE 1:1 SIZE A4	PART NO. PDH0001X02B0-1	REV. A1 SHEET 2 OF 2		